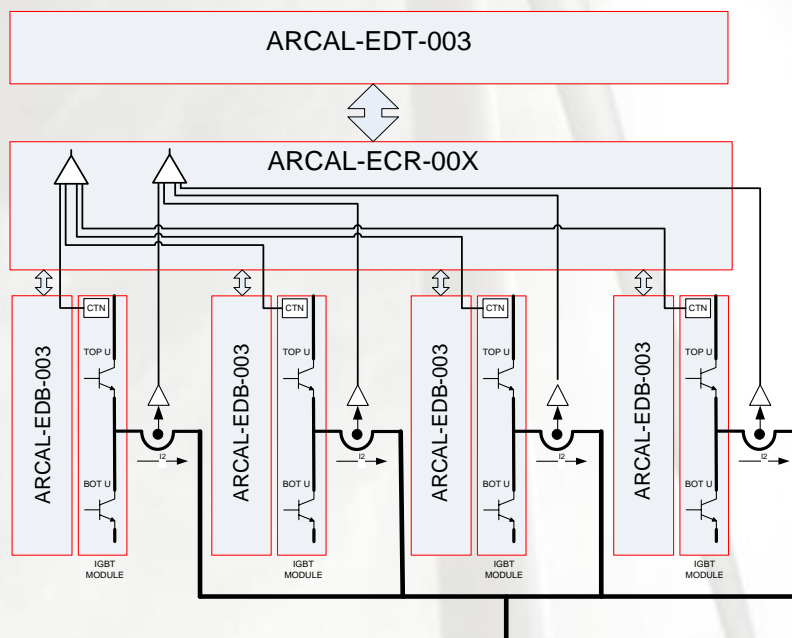


# POWER CONVERTER : MODULAR APPROACH WITH ARCEL GATE DRIVE

**ARCAL-EDT-003** can drive up to 4 ECONODUALs in parallel, by addition of interface board.

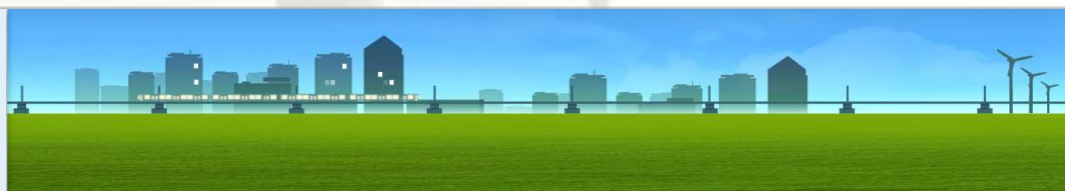
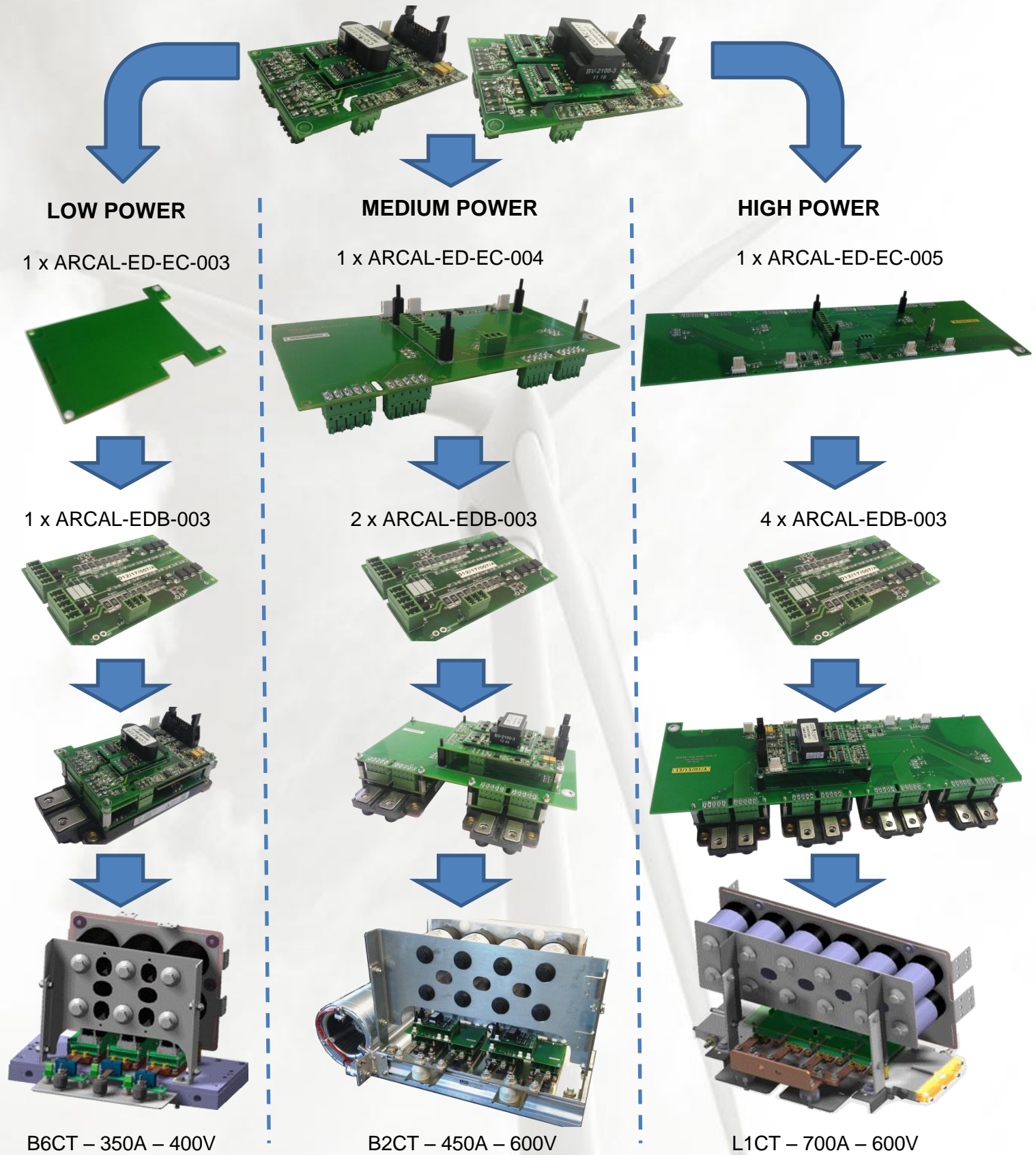
## Main Specifications :

- Closed or open loop current sensor can be added automatically, with overload detection
- All CTN temperature measured, and the maximum value return by the gate drive, with overload detection
- Gate drive based on 2SC0435 or 2SC0108 CONCEPT, according to the gate drive power needed
- HB, TOP-BOT and Direct mode compatible

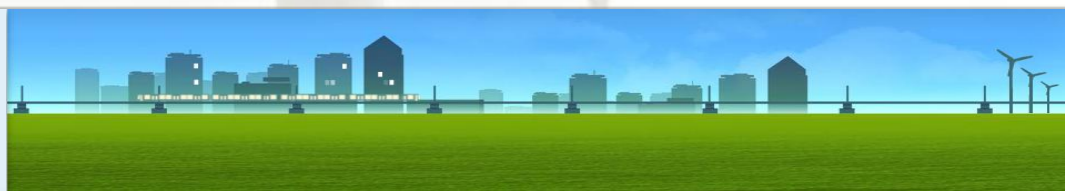
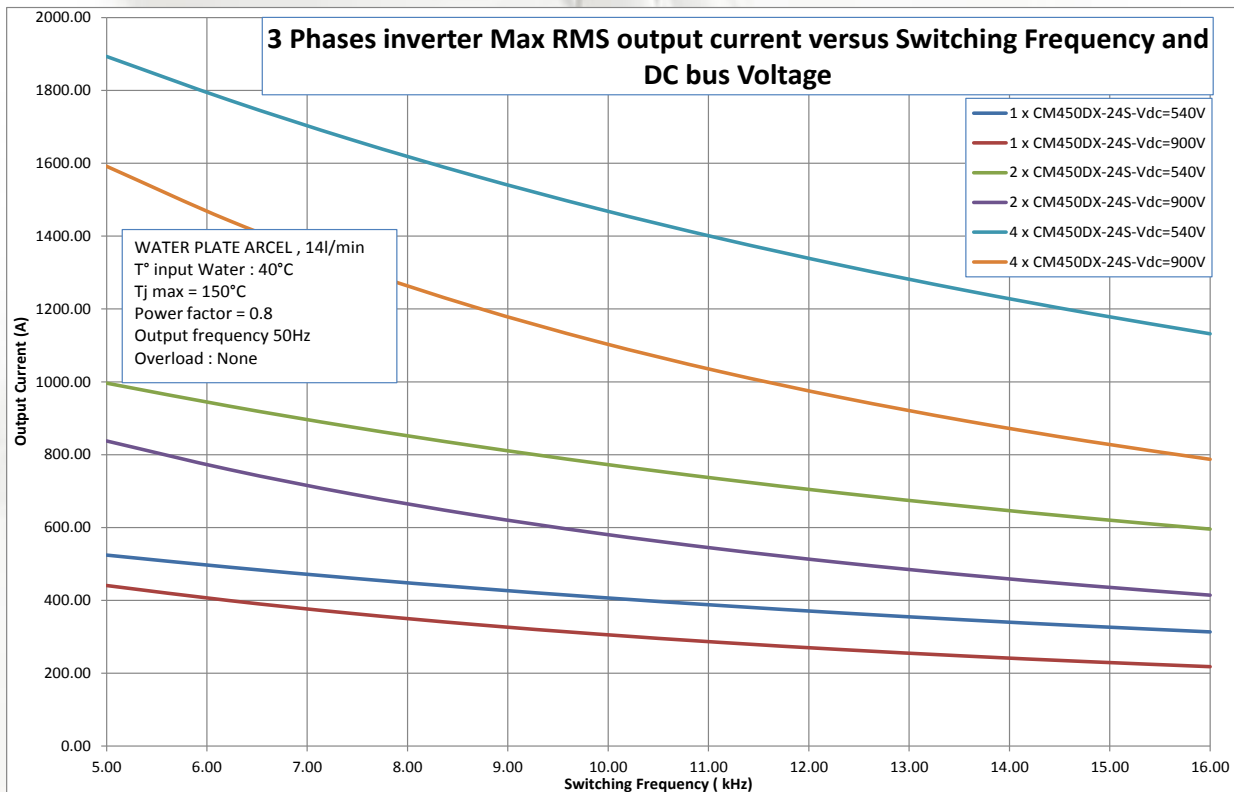
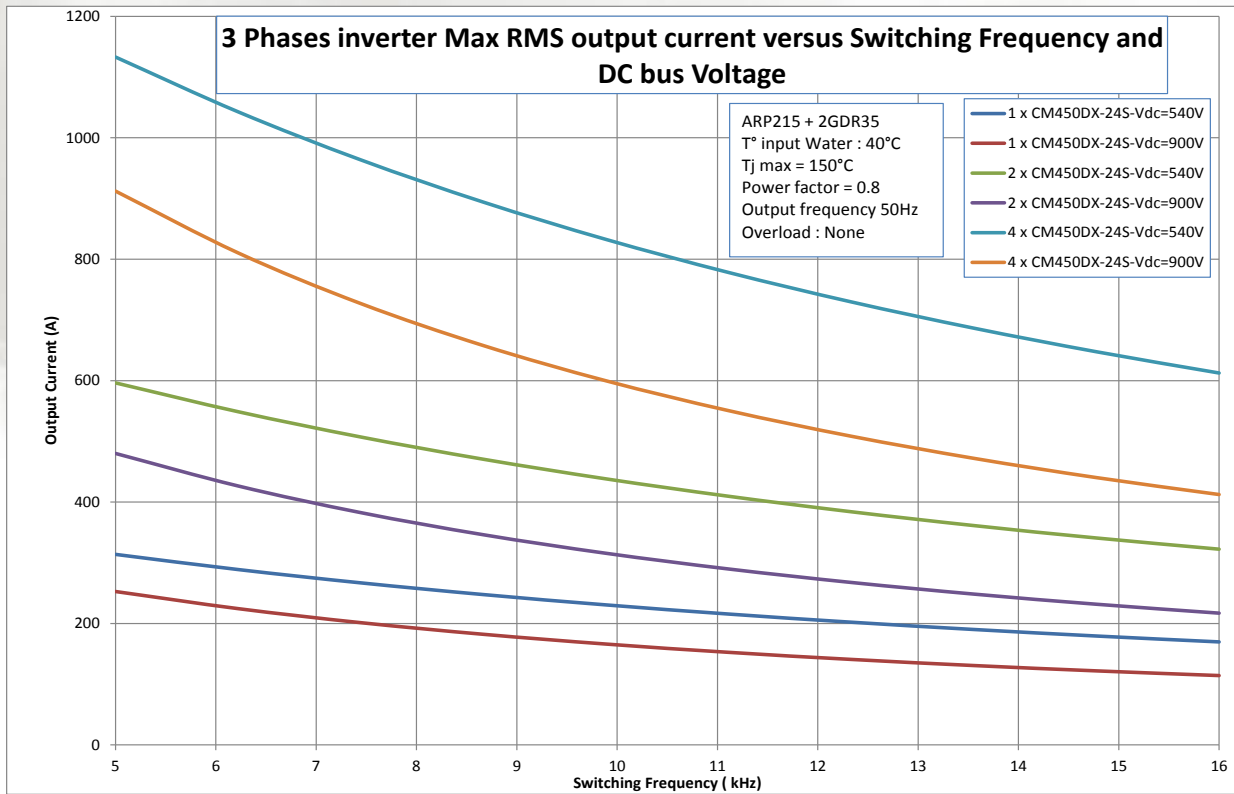


# ACCORDING TO POWER ASSEMBLY :

## 1 GATE DRIVE, 3 SOLUTIONS :



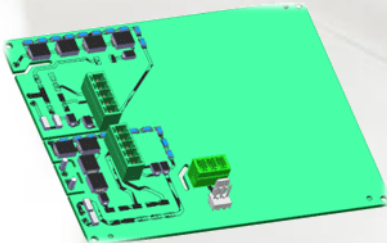
# Example of performance with Mitsubishi CM450DX-24S



# GATE DRIVE FOR DXL MODULES



ARCA-NX-BOT



MITSUBISHI DXL  
MODULE



With an ARCAL-EDT-003 based on a core CONCEPT, this new driver is suitable for :

- CM600DXL-24S
- CM1000DXL-24S
- Collector Current (with additional sensor) and CTN temperature measurement and protection
- HB and direct mode
- HE10-14 compatible with all ARCEL drivers
- Available with 2SC0108 or 2SC0435 core.

